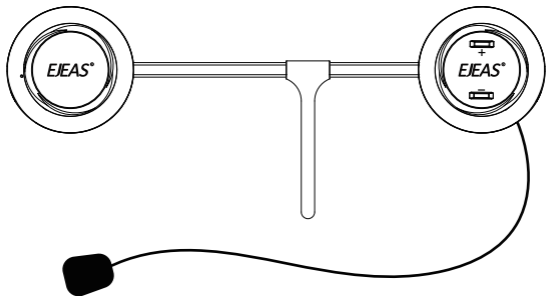




More  
Languages



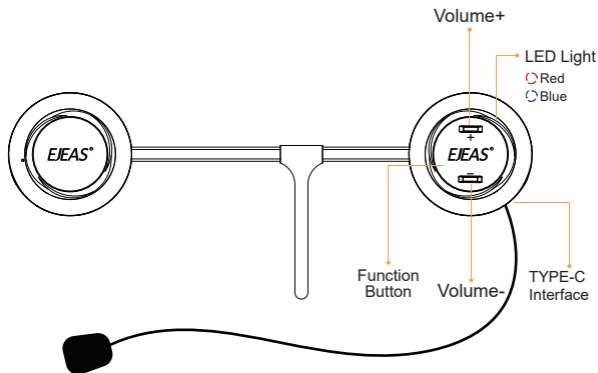
Certified Model	Version Model
S2	Frostlink 4-people

**User Manual**

**Ski Helmet  
Intercom  
System**

q [www.ejeas.com](http://www.ejeas.com)

# Product Details



Applicable temperature  
-40°C to 45°C



MESH 4  
People Intercom



Music  
Share



Simultaneous  
Intercom and Music



Firmware  
Upgrade Supported



Voice  
Assistant



Super  
Penetrating Power



Support  
Mobile App

# Product Operation

## Operation Diagram



Click



Double-click



Long press  
for 1 second



Long press  
for 2 seconds



Long press  
for 5 seconds

## Basic Operation

**Power ON/OFF** Please charge it before using



### ON

Long press < Function Button > for 1 second, until the blue light flashes with a voice prompt. After powering on, blue light flashes slowly in standby mode.

◦ Blue light flashes slowly

? "Di, Di, Di, Di, Di"



### OFF

Long press < Function Button > + < Volume - >, until the voice prompt says "Power off"

◦ Indicator light off

? "Power Off"

Reset: It will automatically power off while charging and can be used while charging after powering on.

## Low Battery Indication



When the battery is low, the red light flashes twice with a voice prompt "Low Battery". When the battery is extremely low, the device will automatically power off.

## Charging Indication



The red light is always on when using USB charging. The red light is off when fully charged.

Battery Inquiry: After connecting to the phone via Bluetooth, you can see the power icon on the phone side.

## Menu Options

**1** Simultaneously press and hold the < Volume + > < Volume - > for about 1 second to open the menu option, and the voice prompt "Menu" will appear.

- Blue light flashing
- ? "Menu"

**2** Short press the < Volume + > / < Volume - > to move the option, voice broadcast the current option, and short press the < Function Button > to execute the option.

- Blue light flashing
- ? "Current Options"

**3** If there is a numerical value selection, continue to short press the < Volume + > / < Volume - > to select the value, then long press the < Function Button > to exit the menu. The voice prompts "Exit menu".

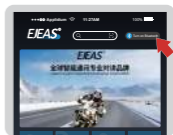
- Blue light flashing
- ? "Exit Menu"

If there is no numerical selection, execute the option directly and automatically exit the menu.

Option	Restore Default Settings	Mesh Channel (1)	Listen Mesh Pairing	Listen Mesh Pairing
Numerical Value	None	1~5	None	None

Note (1): Can only be selected when Mesh intercom is turned on.

**Mobile App** APP provides intercom group, music control, FM control, switch off, check authenticity and other functions.



- Download and install EJEAS APP for the first time.
- Press and hold (approx. 5s) <Function Button> until the red and blue lights flash alternately to enter phone pairing.  
Red and blue lights flash alternately
- Open the APP, click on the Bluetooth icon in the top right corner, the interface shows the name of the intercom device searched, select the intercom device to be connected, click to connect.  
(IOS system need to enter the phone pairing again, in the system settings->Bluetooth, connect audio Bluetooth).
- Open the APP the next time you use it. Click the Bluetooth icon in the top right corner and click to select Intercom for connection from the paired devices.

## Mesh Intercom



When entering the Mesh intercom, Bluetooth music can be played at the same time .

Mesh intercom is a multi-hop technology mesh network intercom (Communication frequency 470-488MHz). On account of large number of participants and unrestricted location, people are able to move at will within the effective range. It is not only superior to the traditional Bluetooth chain intercom, but has a longer transmission distance and better anti-interference ability.



Features: Intercom with up to 4 people, 5 channels in total. If participating in campaign mode as a listener, there is no limit to the number of people who can join the intercom in a listen-only manner.

## Microphone Mute



When using Mesh Intercom, you can mute the microphone with a short press of the <Volume +> + <Volume ->, so that the sound of your own voice will not be sent to others.

? "Microphone Mute"

Press <Volume +> + <Volume -> to unmute.

? "Microphone unmute"

Note: Only valid for Mesh intercom.

## Pairing Steps as Members:



- 1 All devices first enter the intercom pairing state, long press <Volume +> + <Function Button> (about 5s) until you hear a prompt and the red light and blue light flash alternately.

Red and blue lights flash alternately

? "Mesh Pairing"



Paired Server

- 2 Take one of them as the pairing server, click the <Volume +> + <Volume ->, you will hear a "beep" sound, and the red and blue lights will flash alternately.

Red and blue lights flash alternately

? "Bi"

Wait a few moments and you hear the prompt "Channel n" from all the intercoms, you can start communicating and hear each other's voices.

### Intercom Reconnection



When you power on the intercom for the next use, short press the <Volume +>+<Function Button>. You will hear the prompt "Join the Mesh." Wait for a moment, and you will hear the prompt "Channel n", you can talk to each other.

### Turn off MESH Intercom



Press and hold the <Volume +>+<Function Button> (about 1s) to turn off Mesh Intercom. The voice prompts "Mesh Close".

### Intercom Channel Switching



There are a total of 5 channels, which can be changed through the menu (as explained in the menu on page 3 of the manual). Channels can be switched forward or backward, note that the entire team needs to be on the same channel to talk to each other.

When the signal is unstable, you can switch channels to adjust.

If the device is powered off without turning the intercom off, the intercom will be automatically restored upon the next power-on.

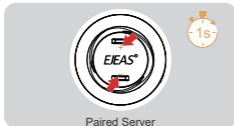
## Pairing Steps as Listeners:

In the case that other intercoms have formed a team, you can become the listener of the team through pairing.



- 1 Take the intercom to be paired, enter listening mode pairing, open the menu (as explained in the menu on page 3 of the manual.), select Mesh listening mode pairing, and prompt "Mesh system listening mode pairing". The red light and blue light flash alternately.

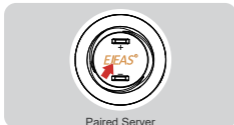
Red and blue lights flash alternately  
? "Listen Mesh Pairing"



- 2 Take the intercom to be paired, enter listening mode pairing, open the menu (as explained in the menu on page 3 of the manual), select Mesh listening mode pairing, and prompt "Mesh system listening mode pairing".

Note: Unjoined machines can only be joined again through the server.

? "Listen Mesh Pairing"



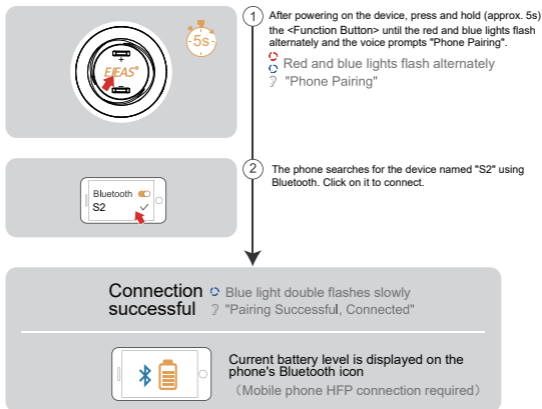
- 3 Short press the <Function Button> again, and you will hear a "beep" sound, with alternating red and blue lights flashing.

Red and blue lights flash alternately  
? "Du"

Wait a moment and hear "Pairing Successful" from all intercoms. Wait a few more minutes and hear "Channel n". This means that you have joined the intercom network and can communicate with others.

## Mobile Phone Pairing

This intercom supports connection to mobile phones for playing songs, making calls, and waking up voice assistants. Up to 2 mobile phones can be connected at the same time.



### Bluetooth Reconnection With Mobile Phones

After switching on, it automatically connects back to the last connected phone Bluetooth. When there is no connection, click on the <Function Button > to reconnect with the last mobile device that was connected to Bluetooth.



## Mobile Control

### Call Answering

When a call comes in, click on the <Function Button>



### Call Rejection



When a call come, press the <Function Button> for about 1s

### Hang Up



During a call, click on the <Function Button>

### Call Redial



When standby/playing music, quickly double-click the <Function Button>

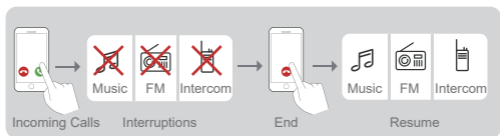
### Cancel Redial



During redial, click on <Function Button>

## Phone Priority

When a call comes in, it will interrupt Bluetooth music, FM radio, intercom, and resume after hanging up.



## Voice Assistant

When in standby/playing music, press and hold <Function Button>, it depends on your mobile phone.

Press and hold <Function Button> to wake up voice assistant.

- "Open Music"
- "Previous Song"
- "Next Song"
- "Call EJEAS"
- "Open Navigation"

## Music Control

### Play/Pause



### Previous Song



### Next Song



### Music Playing



### Volume -



### Volume +

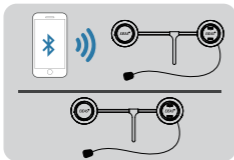




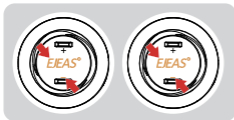
## Music Share

Share the music played by Bluetooth on your phone to another device, and this function cannot be used during Bluetooth intercom.

This function cannot be used when two phones are connected simultaneously.



- 1 Take an intercom as the host, connect it to the phone, and the other one is the slave.



- 2 Press the <Function Button>+<Volume -> at the same time between the host and slave to enter the music sharing search connection state.

? "Music Share"

After the connection is successful, play the phone music of the host, and the music can also be played from the speaker.

? "Music Share Connected"



Press the <Function Button>+<Volume -> again to exit music sharing.

? "Music Share Disconnected"

## Firmware Upgrades



Connect to the computer with a USB data cable. Download and open the "EJEAS Upgrade.exe" upgrade software. Click on the "Upgrade" button to start and wait for the upgrade to complete.

**Note:** Upgrading must use the standard data cable from EJEAS.

## Product Installation Steps

