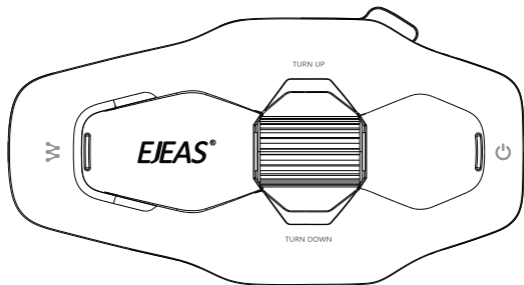


EJEAS®

MESH Intercom Expert



More Languages



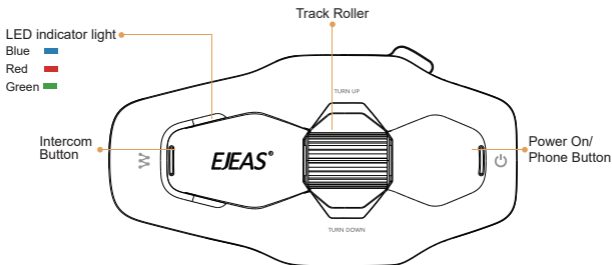
Certified Model	Version Model
X10	10-Riders

User Manual

Mesh Groups
Intercom System

q www.ejeas.com

Product Introduction



MESH 10
Person Intercom



Replaceable
Color Cases



Music Sharing



IP67 Waterproof



Magnetic
Charging



Connects to other
brands of
Bluetooth radios

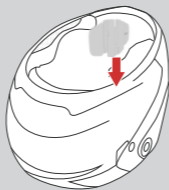


Automatic
reconnection within
5ms after
effective distance
disconnection

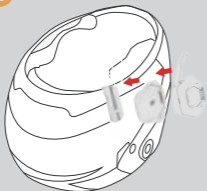


Intelligent
Voice Control

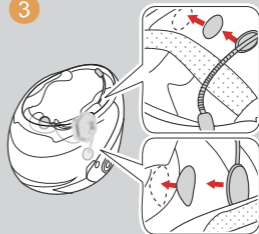
1



2



3



4

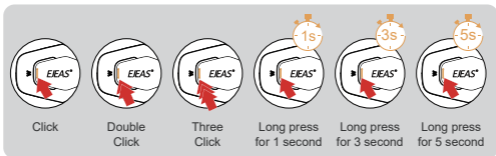


5



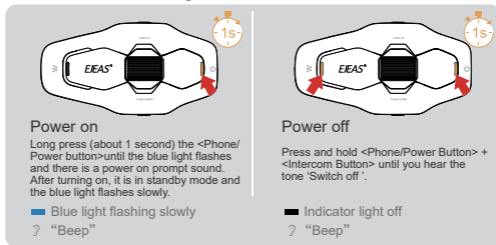
Product Operation

Button Description



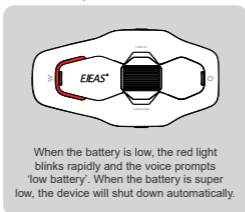
Basic Operation

Power on/off Please charge it well before use.

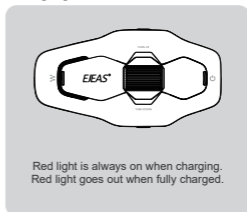


Reset: the machine will automatically switch off when charging, and can be used while charging after switching on.

Low battery indicator

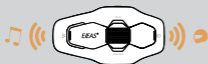


Charging indication



Battery level check: After connecting your mobile phone via Bluetooth, you can see the battery level icon on your mobile phone.

Mesh Intercom Function



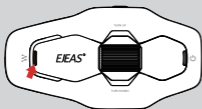
Resonance Function
(When Mesh is enabled, Bluetooth music can be played at the same time.)

Mesh intercom is a multi-hop technology mesh network intercom (communication frequency 470~488MHz), the number of intercom, and is not subject to positional restrictions, effective intercom range of personnel can be moved arbitrarily, superior to the traditional chained bluetooth intercom, but also has a longer transmission distance and better anti-jamming ability.



Features: Intercom for up to 10 people on 5 channels.

Mesh Microphone Mute



When using Mesh Intercom, you can click <Intercom button> to mute the microphone, so that your own voice will not be sent to others.
? "Microphone Mute"

Click <Intercom Button> again to unmute.
? "Unmute the microphone"

Note: Valid only for Mesh intercom.

Intercom channel switching

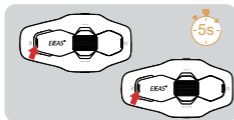


There are 5 channels in total, click <Intercom Button> + <Track Roller> to switch channels forward, note that you need the whole team to keep the same channel in order to talk to each other.

When the signal is unstable, you can switch channels to get a better call.

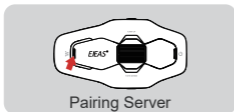
? "Channel n"

Intercom pairing process with group member roles:



- 1 All radios first enter the intercom pairing state, long press the <Intercom key> (about 5s) until you hear a beep and the red and green lights flash alternately.

Red light and green light flashing alternately
? "Mesh System Pairing"



- 2 Take one of them as the pairing server, click the <Intercom Button>, you will hear a beep and the red light and green light will double flash alternately.

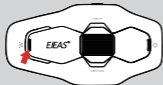
Red light and green light flashing alternately
? "Bi"

Wait a moment, hear all the intercom prompt 'pairing success', that is to say, it has been paired successfully.

? "Pairing Success"

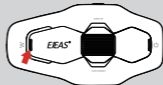
Wait a few moments and hear all the radios indicate 'channel n', then you can talk to each other and hear each other's voices.

Intercom Reconnection



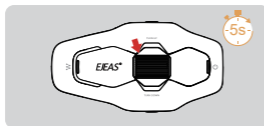
The next time you switch on the power, press the <Track Roller>, it will prompt 'enter mesh system', wait for a while, it will prompt 'channel n', then you can talk back to each other. If you turn off the power without switching off the intercom, the intercom will be resumed automatically when you turn on the power next time.

Turn off MESH Intercom



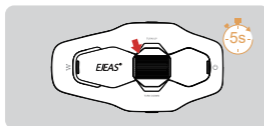
To turn off the Mesh intercom, press and hold <Intercom Button> (approx. 1s) and the voice prompts 'Mesh off'.

Bluetooth intercom function for two persons



- 1 After switching on the radio, press and hold the <Track Roller> (about 5s) until the red and blue lights flash alternately, and there is a pairing voice prompting 'Bluetooth intercom pairing, wait for connecting with other intercom.

■ Red and blue lights flash alternately
? "Bluetooth intercom pairing"

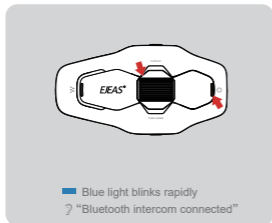


- 2 The other intercom enters the pairing state using the same operation, and when the two intercom discover each other, one of them will initiate the pairing connection.

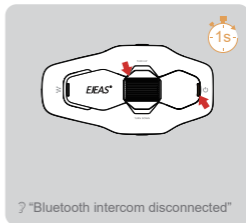
After a few moments, the connection was successful.

? "Pairing Success"

Intercom Connection

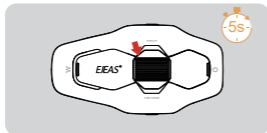


Intercom Disconnect




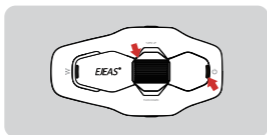
Pair headset or other brand Bluetooth intercom search

Note: This feature is not guaranteed to be compatible with all Bluetooth headsets or Bluetooth intercoms on the market.




- 1 Press and hold <Track Roller> (about 5s) until the red and blue lights flash alternately and the pairing voice prompts 'Bluetooth intercom pairing'.

 Red and blue lights flash alternately
? "Bluetooth Intercom Pairing"



- 2 Click <Power On/Telephone Button> + <Track Roller> again, the voice prompts 'Bluetooth intercom search' and the red and blue lights flash alternately.

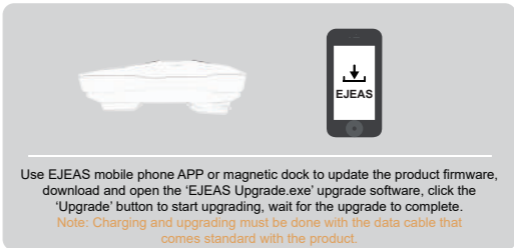
 Red and blue lights flash alternately
? "Bluetooth intercom search"



- 3 At this time, the intercom is searching for other intercom that are in the pairing status, and after searching and finding other intercom, it initiates the pairing connection.

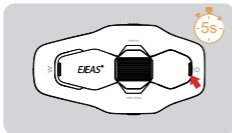
Pairing Success. ? "Pairing Success"

Firmware Upgrade



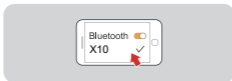
Mobile Phone Pairing

This intercom supports connecting to mobile phones, playing songs and making calls, and waking up voice assistant. Support up to 2 mobile phones to connect at the same time.




1 After switching on the phone, press and hold (approx. 5s) the <Phone/On button> until the red and blue lights flash alternately and the voice prompts 'Pairing the phone'.

 The red and blue lights flash alternately.
? "Mobile Phone Pairing"



2 Search for the device named 'X10' on your mobile phone's Bluetooth and click on it to pair and connect.

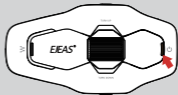
The connection was successful  Blue light slow double flash
? "Pairing Success"



Current battery level is displayed on the Bluetooth icon of the mobile phone
(Requires mobile phone HFP connection)

Bluetooth reconnect with mobile phone

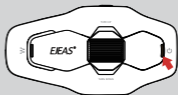
After switching on the phone, it automatically connects back to the last Bluetooth of the last mobile phone it was connected to. When there is no connection, click <Phone/On Button> to connect back to the last mobile phone Bluetooth was connected to last time.

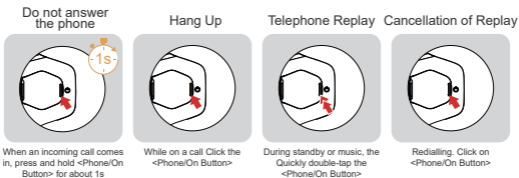


Mobile Control

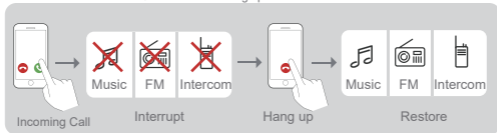
Answer the Phone

When an incoming call comes in, click <Phone/On Button>.

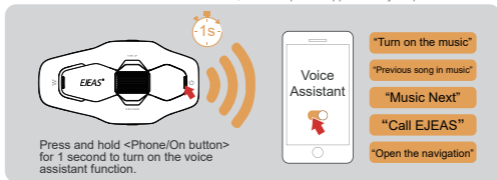




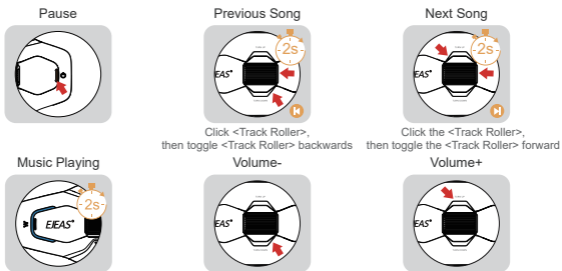
Telephone priority Incoming call interrupts Bluetooth music, FM radio, intercom, resume after hang up



Voice Assistant When in standby/playing music, long press the <Phone/On Button>, which requires support from your phone.



Music Control



Radio (FM)

FM on/off 76~108MHz

Automatically search for radio stations and play them automatically when they are searched for. FM can be turned on during intercom, so that you can listen to the radio while intercom.



Double click the <Track Roller> and the prompt sound will be 'FM radio'.

? "FM Radio"

Double-tap <Track Roller>, prompt 'FM radio off'.

? "FM Radio Off"

Switching Channels



Click <Track Roller>, then toggle <Track Roller> backwards

Frequency -



First click the <Track Roller>, then move the <Track Roller> forward

Frequency +

Volume Control A total of 7 FM volume levels

When using FM alone



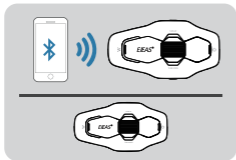
Volume-



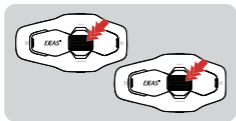
Volume+

Music Sharing

Share the music played on your mobile phone's Bluetooth to another device, this function cannot be used when Bluetooth intercom is available. This function cannot be used when two mobile phones have been connected at the same time.



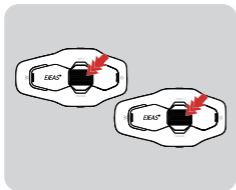
- 1 Take one intercom as the master and connect it to the mobile phone and the other as the slave.



- 2 Triple-tap <Track Roller> on both the master and slave to enter the Music Share Search connection state.
? "Music Sharing"

When the connection is successful, play the mobile phone music from the host, and the music will come out of the slave speakers.

? "Music Sharing Connection Successful"



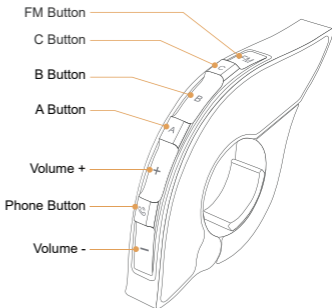
Triple-tap <Track Roller> again to exit music sharing.

? "Music Sharing Connection Disconnected"

Handle EUC (Optional)

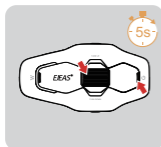
Button Description

Buttons	Actions	Function
Volume +	Short Press	Intercom Volume +/ Music Volume +/ FM Volume +
	Long press	Next song when music is playing / When FM is on, tune up
	Double click	None
Volume -	Short Press	Intercom volume -/ Music volume -/ FM volume -
	Long press	Previous song when music is playing / When FM is on, down tuning
	Double click	None
Phone Button	Short Press	Answering the phone during an incoming call Hanging up during a call Music play/pause When no cell phone is connected Connect the last connected cell phone
	Long press	Rejecting calls when they come in Voice assistant
	Double click	Last number redial
A Button	Short Press	1. Open Mesh intercom 2. When Mesh is connected, mute/unmute the microphone
	Long press	None
	Double click	None
B Button	Short Press	Turn off Mesh Intercom
	Long press	None
	Double click	None



Buttons	Actions	Function
C Button	Short Press	Initiate Bluetooth intercom connection
	Long Press	Disconnect the intercom
	Double Click	Music sharing on/off
FM Button	Short Press	Turn FM on/off
Volume - + FM Button	Super Long Press	Clear handle pairing records

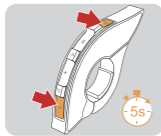
Handle Pairing



1


Long press the product <Phone Button> + <Track Roller> for about 3s, enter the joystick pairing mode, voice prompts "Remote Control Joystick Pairing", red and blue lights flash alternately, no pairing success in 2 minutes, exit pairing.

-  The red and blue lights flash alternately
- ? "Remote Control Handle Pairing"



2

Handle long press <FM button> + <Volume -> for about 5s to clear the record until the red and blue lights come on.

-  Until the red and blue lights come on



3

EUC clicks any button.

Pairing Success ? "Pairing Success"
(No successful pairing within 2 minutes, exit pairing)

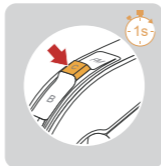
Handle Operation

Mesh intercom reconnect/disconnect and handset controls operate the same as on the machine.

Bluetooth Intercom
Connection



Bluetooth Intercom
Disconnect

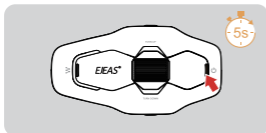


FM On/Off



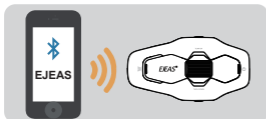


1 Download and install the EJEAS Mobile App for the first time.



2 Long press (approx. 5s) <Phone/On Button> until the red and blue lights flash alternately fast to enter phone pairing.

 The red and blue lights flash alternately.

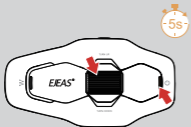


3 Open the APP, click the Bluetooth icon in the upper right corner, the interface shows the name of the intercom device searched, select the name of the intercom device to be connected, click to connect. (IOS system need to enter the phone pairing again, in the system settings -> Bluetooth, connect audio Bluetooth)

The next time you use it, open the app, click the Bluetooth icon in the upper right corner, and click to select Connect Intercom from the paired devices.

APP provides intercom group, music control, FM control, shutdown, check authenticity and other functions.

Restore Default Settings



Long press <Phone/On Button> + <Track Roller> for about 5s, the voice prompts "Restore Default Settings", deletes the pairing record, and then automatically reboots the device.

? "Restore Default Settings"

Intelligent voice function

The X10 supports the intelligent voice function, which allows you to control the intercom through the machine's built-in voice phrases. This greatly simplifies the experience and enhances operational efficiency.

Operation method:

Step 1: The intercom is turned on. The Intelligent Voice function can only be used when the intercom is on.

Step 2: Speak the activation phrase into the microphone (see table below for activation phrase). If the activation is successful, you will hear a "drop" sound.

Step 3: After the smart voice is activated, you can control the walkie-talkie according to the smart voice phrase.

Serial Number	English Version	Functional Description
1	Hey EJEAS	Activate an entry
2	Answer Call	
3	Reject Call	
4	Speed Dial	
5	Call Redial	
6	Play Music	
7	Pause Music	
8	Previous Song	
9	Next Song	
10	Increase Volume	
11	Decrease Volume	
12	Increase Intercom Volume	
13	Decrease Intercom Volume	
14	Resume Intercom	
15	Pause Intercom	
16	Mute Microphone	
17	Unmute Microphone	
18	Turn On Voice Assistant	
19	Turn Off Voice Assistant	
20	Battery Status	
21	Turn On FM	
22	Turn Off FM	
23	Previous FM Station	
24	Next FM Station	
25	Mesh Pairing	
26	Mesh Pairing Completed	
27	Turn On Music Share	
28	Turn Off Music Share	
29	Previous Channel	
30	Next Channel	