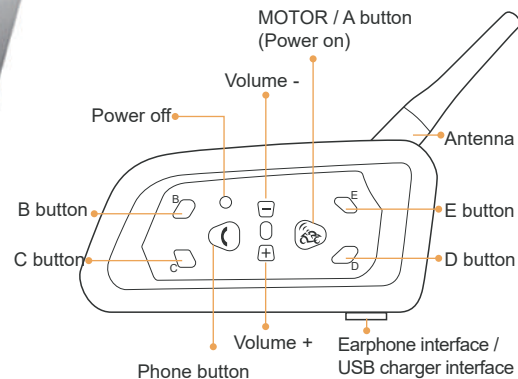




More Languages

## About the host



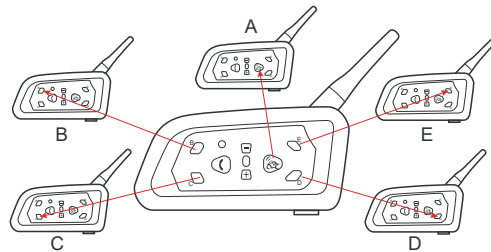
## Connection Method

V6C is an 2-way communication intercom up to 6 riders to connect at a time, 1 main device can talk with another 5 sub-machines.

Connect main device and A device, long press the for 5s till red & blue lights flash. After both of them find each other, one of them will automatically initiate a pairing connection, and the blue light will flash quickly. After a while, the blue light flashes slow simultaneously, two devices can normal talk.

To pair the next sub-machine, press the pairing button of main device first to disconnect. Connect another four V6C, just repeat the pairing method mentioned above.

The MOTOR/B/C/D/E buttons on the main device are for pairing with the MOTOR/B/C/D/E buttons on five other subdevices. After pairing, press Corresponding pairing buttons of main device to talk with other five subdevices.



## Functions

### 1. Power on/Power off

Power on: Long press for 2s till the indicator light flash.  
Power off: Press

### 2. Connect with phone (GPS/MP3)

Long press 5s, until red and blue light flash. Turn on phone bluetooth and search bluetooth to connect V6, pairing successfully, intercom's blue light flash. (If GPS/MP3 support bluetooth function, same operation way with phone)

### 3. Last number redial

After connecting phone, long press 3s, device will automatic dial phone of the final phone calling number.

### 4. Receiving a call

When comes a call, without operation 5s, phones will automatic receive.

### 5. Refuse a call

When comes a call, press to end call.

### 6. Play/Suspend music

Short press (95% compatible with cellphone music play).

### 7. Volume control

Add volume: Press   
Down volume: Press

### 8. Choose music

Previous music: Long press for 2s  
Next music: Long press for 2s

### 9. Charging tip

When charging, the red light is always on, after the full charge, the red light is off.

### 10. Clear pairing (Restore factory settings)

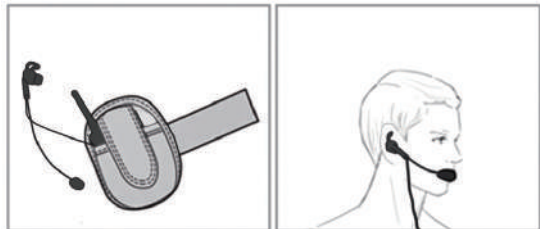
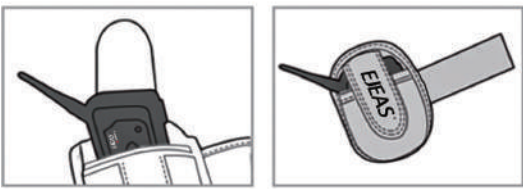
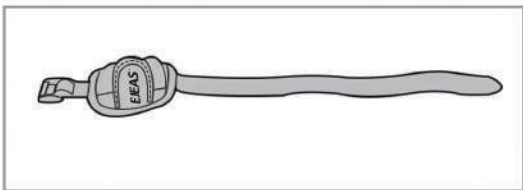
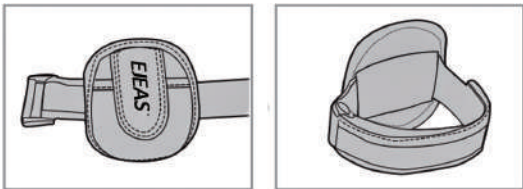
Press and button at the same time, the indicator light flashes red three times and blue once.

## Attentions

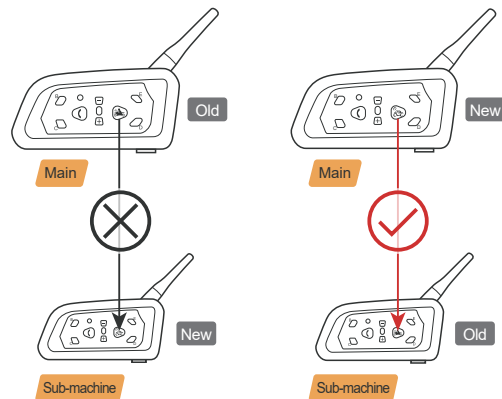
1. Please use the standard charger to ensure the battery life.
2. To prevent V6C from rain and water, the headset should be fully inserted in.

Certified Model	Version Model
V6C	6-Referee

REFEREE COMMUNICATION  
BLUETOOTH INTERCOM



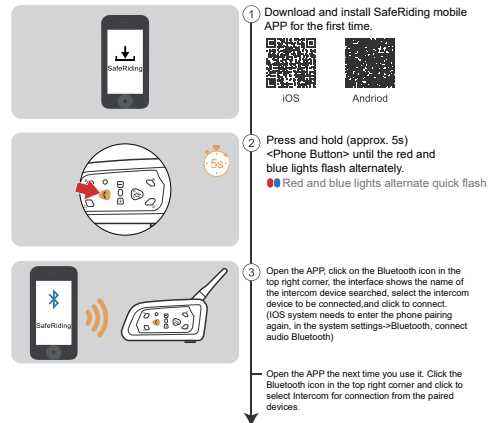
## Pairing Instructions for the Intercom



\* When the old version of the machine is used as the main machine, it cannot be successfully paired with the new version of the machine. The new version of the machine must be used as the main machine to successfully pair with the old version of the machine.

**Note** If the machine cannot be paired, please clear the pairing first, and use the other one as the main machine to pair.

## Mobile App



APP provides intercom group, music control, FM control, switch off, check authenticity and other functions.

## Restore Default Settings

