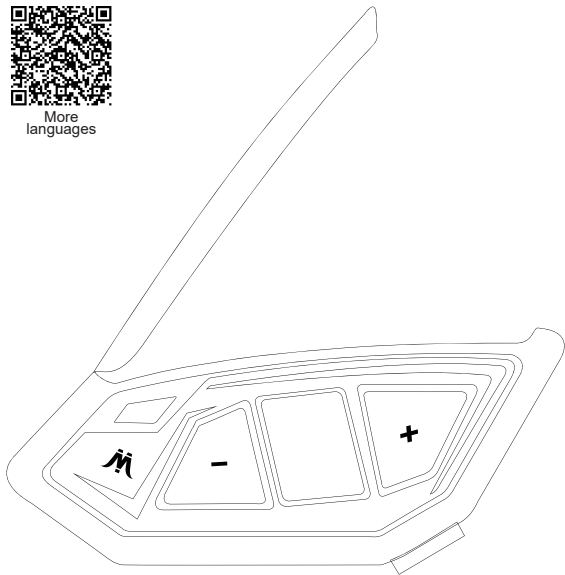




More  
languages



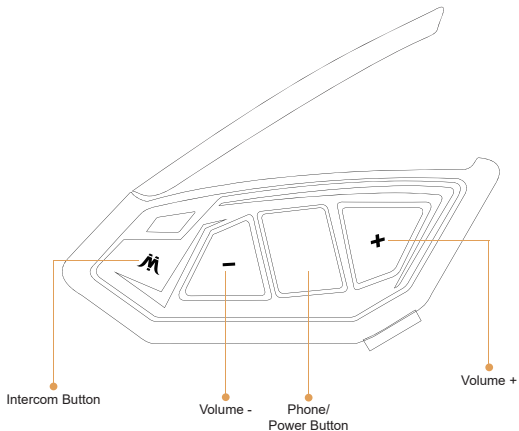
# MS4/MS6/MS8

## User Manuals

Mesh group intercom system

q [www.ejeas.com](http://www.ejeas.com)

# Product Details



MESH Intercom



Bluetooth Intercom



Bluetooth Music



Auto phone receiving



Voice Assistant



FM Radio



Support  
EUC Remote



Support Mobile App

# Product Model



MS4 Off-road Intercom



4 riders supported, the max distance between 2 riders is 1.8km in the open area. The max distance is 0.9km when in the traffic. The max distance of 4 riders connection is about 1.5-3km.



MS6 Off-road Intercom



6 riders supported, the max distance between 2 riders is 1.8km in the open area. The max distance is 0.9km when in the traffic. The max distance of 6 riders connection is about 2.5-5km.



MS8 Off-road Intercom



8 riders supported, the max distance between 2 riders is 1.8km in the open area. The max distance is 0.9km when in the traffic. The max distance of 8 riders connection is about 3.5-7km

## LED Lights



Blue



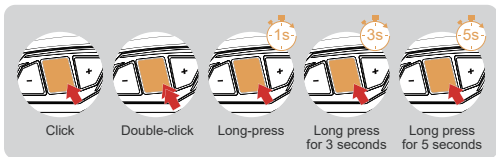
Red



Green

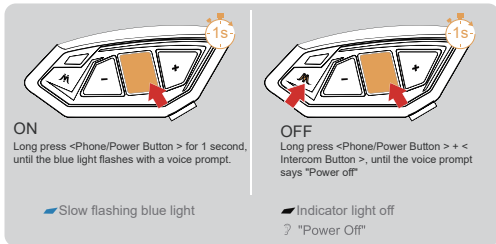
# Product Operation

## Operation Diagram

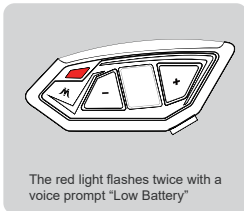


## Basic Operation

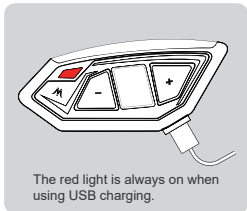
**Power ON/OFF** Please charge it before using



**Low Battery Indication**



**Charging Indication**



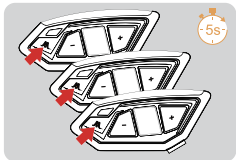
## Mesh Intercom




When entering the Mesh network, Bluetooth music can be played at the same time. When someone speaks, it will automatically switch to Mesh intercom, and no one speaks after a period of time will automatically playback the music.

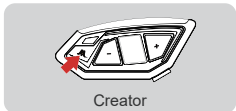
Mesh intercom is a mesh network intercom. (Communication frequency 470-488MHz). On account of large number of participants and unrestricted location, people are able to move at will within the effective range. It is not only superior to the traditional Bluetooth chain intercom, but has a longer transmission distance and better anti-interference ability. The product has 2 mesh intercom modes: sport mode and listening mode.

### Sport mode




- 1 All intercoms first go into sport mode pairing. Long press the <Intercom Button> (approx. 5s) until the voice prompt "Sport Mesh Pairing" is heard. The red light flashes alternately with the green light.

 Red light and green light flashing alternately ? "Sport Mesh Pairing"



- 2 Take one of the units as the pairing server and click the <Intercom Button>, a beep is heard and both red light and green light flash alternately twice.

 Red light and green light flashing alternately ? "du"

Wait for a moment and hear the message "pairing successful", which means that the pairing has been successful.

You will then hear all intercoms indication {channel n, xxx.x megahertz}, at which point pairing is complete and you can then talk to each other and hear each other's voices.

### Intercom Reconnection



Press the <Intercom Button> prompt "Mesh network movement mode". Wait a moment, then prompt "channel n, xxx.megahertz" and you are ready to talk.

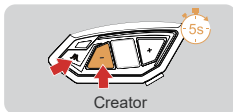
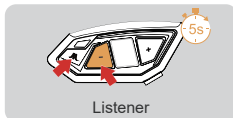
### Turn off Mesh Intercom





To switch off the Mesh Intercom, click <Intercom Button> (for approx. 1s) and the message "Mesh Close" will be displayed.

## Listening Mode

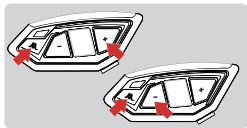
To be a listening role on a sports team, provided that other intercoms have been paired to form a team via sports mode. Pairing then follows.



1. Take the intercom to be paired, enter listening mode for pairing, long press <Messenger Button> + <Minus Button> (for about 5s), "Listen Mesh Pairing" will be displayed and both the red light and green light will flash alternately.  
 Red light and green light flashing alternately  
? "Listen Mesh Pairing"
2. Take an intercom that has been paired in sport mode as a pairing server, enter listening mode pairing, long press <Intercom Button> + <Volume -> (about 5s), the prompt will be "Listen Mesh Pairing", then press <Intercom Button>, you will hear a beep and the red light and green light will flash alternately.  
 Red light and green light flashing alternately  
? "du"  
— Wait for a moment and hear the message "pairing successful", which means that the pairing has been successful.

Wait a few moments and hear all the intercoms say "channel n, xxx.x megahertz".  
At this point you can talk to each other and hear each other's voices.

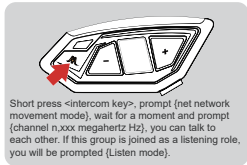
## Intercom Channel Switching



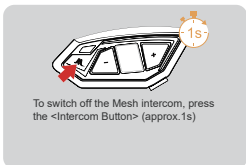
5 channels in total, short press <Intercom Button> + <plus Button>/<Minus Button> to switch channels backwards or forwards. Note that the whole team must be on the same channel to talk to each other.

?{Channel n, xxx.x megahertz}

## Intercom Connection



## Turn off Mesh Intercom

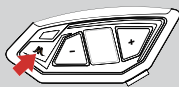


## Intercom Reconnect



If the intercom mode is not turned off and the devices are turned off directly, the devices will automatically resume the intercom mode when they are turned on next time.

## Microphone Mute



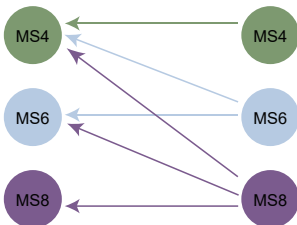
Click on <intercom Button> to mute the microphone. "Microphone Mute" is displayed. Click on the <intercom Button> again to unmute the microphone. The prompt is "Microphone Unmute".

## Sport Mode Compatibility Notes

### Group Member Role Compatibility

Creator

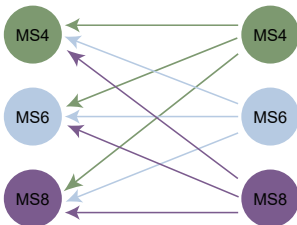
Participants



### Listening For Role Compatibility

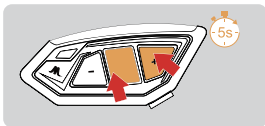
Creator

Participants




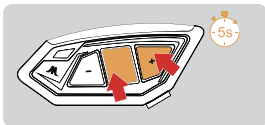
## Bluetooth Intercom

### How To Pair With The Device



- 1 After switching on the phone, press and hold <Phone/Power Button> + <Volume +> (about 5s) until the red and blue lights flash alternately, and the pairing voice prompts "Intercom Pairing". Wait for connection to other intercoms.

 Red light and blue light flashing alternately  
? "Intercom Pairing"

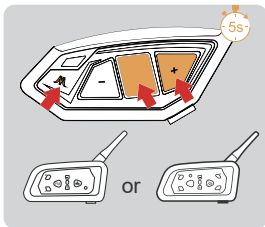



The other intercom enters the pairing state using the same operation. After the two intercoms discover each other, one of them will initiate the pairing connection.

The connection is successful and the intercom begins.

? "Pairing Successful"

### Compatible With Older Model Pairings

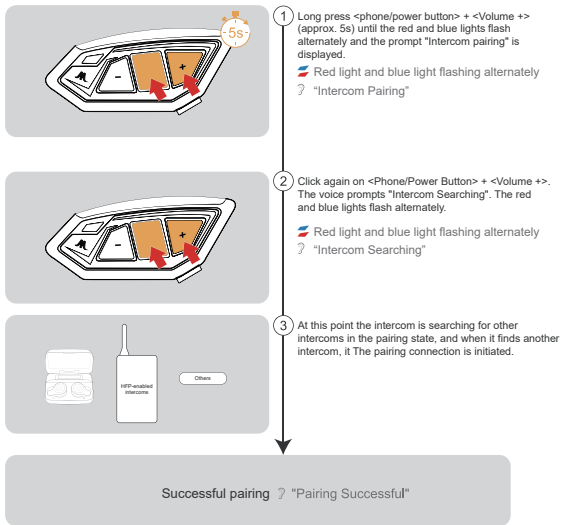


- 1 Simultaneously press and hold <Phone/Power Button> + <Volume +> + <Intercom Button> for approx. 5 seconds to start pairing (red and blue lights flash alternately).  
 Red light and blue light flashing alternately  
? "Intercom Pairing"
- 2 For older models (V6/V4) follow the instructions to enter the search Wait for successful pairing.

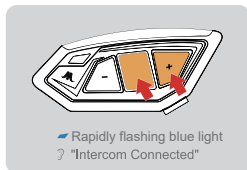


## Pairing headset or other branded Bluetooth intercoms search

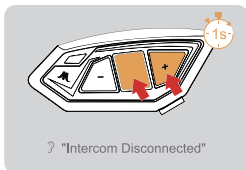
Note: This feature is not guaranteed to be compatible with all Bluetooth headsets or Bluetooth intercoms on the market.



### Intercom Connection

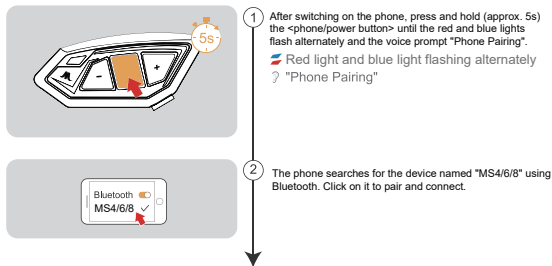


### Intercom Disconnection



## Mobile Phone Pairing

This intercom supports connection to mobile phones for playing songs and making calls, and waking up voice assistants. Up to 2 mobile phones can be connected at the same time.



**Connection successful** Blue light slow flashing twice  
"Pairing Successful, Connected"



Current battery level is displayed on the phone's Bluetooth icon  
(Mobile phone HFP connection required)

### Bluetooth reconnection with mobile phones

After switching on, it automatically connects back to the last connected phone Bluetooth. When there is no connection, click on the back to the last connected phone Bluetooth.



## Mobile Control

### Answering The Phone

When a call comes in, click on the <phone/power button>



## Reject The Phone



When the call comes in, Press and hold <phone/power button> for about 2s

## End The Phone



While on a call, Click on the <phone/power button>

## Last Call Recall



On standby or with music, Quick double click on <phone/power button>

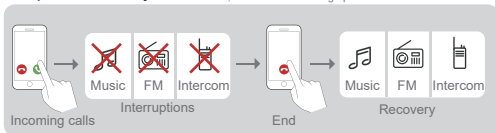
## Cancel Recall



Redial in progress, Click on <phone/power key>

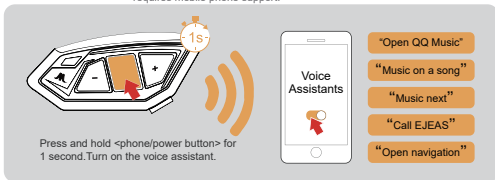
## Telephone Priority

Interrupts Bluetooth music, FM radio and intercom when a call comes in, resumes after ending up.



## Voice Assistant

When in standby/playing music, press and hold <phone/power button>, requires mobile phone support.



## Music Control

### Playback Pausing



### Previous Song



### Next Song



### Music Playing



### Volume -



### Volume +



## Radio (FM)

### FM on/off 76~108MHz

The device can search and play the radio stations automatically.

FM can be used when talking to each other, and we can listen to the radio while talking.



Press and hold <plus key> + <minus key> (approx. 1s) The prompt "FM Radio".

? "FM Radio"

Press and hold <plus key> + <minus key> (approx. 1s) The prompt "FM Radio Off".

? "FM Radio Off"

## Switching Channels



Frequency -



Frequency +

## Volume Adjustment FM with a total of 7 volume levels

When using FM alone



Volume-



Volume+

When FM + Intercom



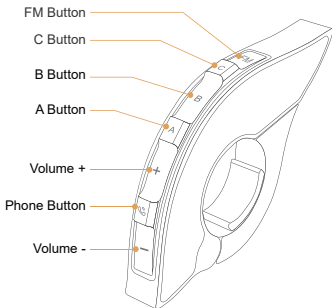
Volume-



Volume+

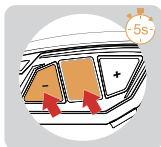
## Key Descriptions

Pushbuttons	Actions	Function
Volume +	Short press	Volume +
	Long press	Next song when music is playing. Tuning up when FM is on
	Double click	FM volume +
Volume -	Short press	Volume -
	Long press	Previous song when music is playing. Tuning down when FM is on
	Double click	FM Volume -
Phone Button	Short press	Answer the phone when it comes in On call, hang up Music play/pause When no mobile phone is connected Connect the last connected phone
	Long press	Reject calls when they come in. Voice assistant
	Double click	Last call Replay
A Button	Short press	Turn on Mesh Intercom Sport mode/ Listen mode
	Long press	Turn off Mesh Intercom
	Double click	
B Button	Short press	
	Long press	
	Double click	



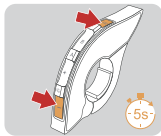
Pushbuttons	Actions	Function
C Button	Short press	Initiate Bluetooth intercom connection
	Long press	Disconnect the intercom
	Double click	
FM Button	Short press	Turn FM on/off
Volume - + FM Button	Super Long Press	Clear handle pairing records

## EUC Pairing



- 1 Press and hold the <Phone/Power button> + <Volume -> for about 5s to enter the pairing mode, the voice prompts "Remote Control Pairing", the red and blue lights flash alternately, if the pairing is not successful within 2 minutes, exit the pairing.

 Red light and blue light flashing alternately  
? "Remote Control Pairing"



- 2 Press and hold the FM+Volume - button on the handle for about 5s to clear the record until the red and blue lights come on.

 Until the red and blue lights come on



- 3 EUC Click any key.

**Pairing Successful** ? "Pairing Successful"  
(No successful pairing within 2 minutes, exit the pairing)

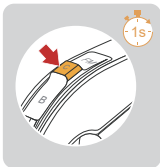
## Handle Operation

Mesh intercom reconnect/disconnect and mobile phone control are the same as on the machine.

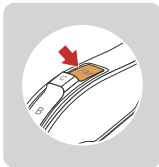
Bluetooth Intercom  
Connection



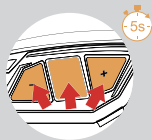
Bluetooth Intercom  
Disconnection



FM  
on/off



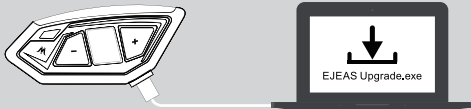
## Restore Default Settings



Press and hold <Phone/Power key> + <Volume +> + <Volume -> for about 5s, the voice prompts "Restore Default Settings" to delete the pairing record, and then automatically reboot the phone.

? "Restore Default Settings"

## Firmware Upgrades



Connect the product to the PC using USB. Download and open the "EJEAS Upgrade.exe" upgrade software. Click on the "Upgrade" button to start the upgrade and wait for the upgrade to complete.



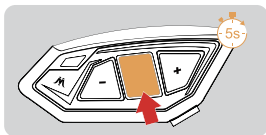
1 First time users download and install SafeRiding Mobile App.



iOS



Andriod



2 Press and hold (approx. 5s) <phone/on button> until the red and blue lights flash alternately to enter phone pairing.

 Red light and blue light flashing alternately



3 Open the APP, click on the Bluetooth icon in the top right corner, the interface shows the name of the intercom device searched, select the intercom device to be connected, click to connect.  
(IOS system need to enter the phone pairing again, in the system settings->Bluetooth, connect audio Bluetooth)

The next time you use the app, open it, click on the Bluetooth icon in the top right corner and click to select Intercom for connection from the paired devices.

APP provides intercom group, music control, FM control, switch off, check authenticity and other functions.