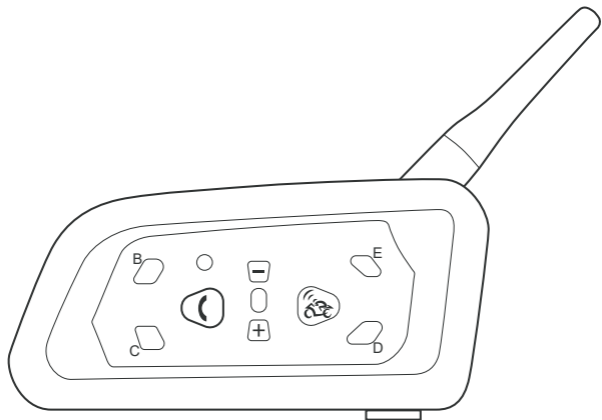


# EJEAS®

MESH Intercom Expert



More  
Languages

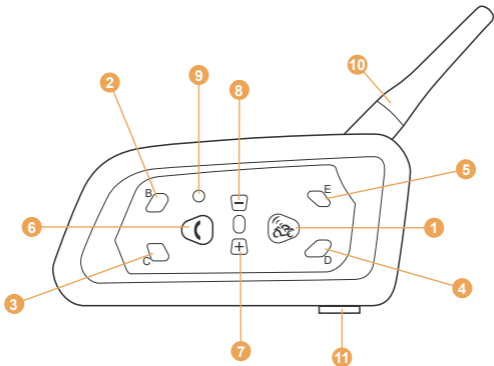


# V6pro

## User Manual

Motorcycle Helmet Intercom System

q [www.ejeas.com](http://www.ejeas.com)



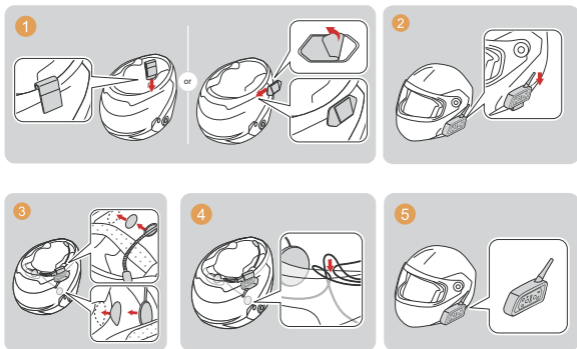
- |  |             |                 |
|--|-------------|-----------------|
| 1. MOTOR/A button(Power on)                    | 2. B button | 3. C button     |
| 4. D button                                    | 5. E button | 6. Phone button |
| 7. Volume +                                    | 8. Volume - | 9. Power off    |
| 10. Antenna                                    |             |                 |
| 11. Earphone interface / USB charger interface |             |                 |

## Product Function

V6 is a performance stable Helmet Bluetooth Intercom. Maximum talking distance is 800 meters, in general, at outdoor environment the talking distance is 300 meters to 800 meters. At same time, it is also as high performance bluetooth headset (range of 10 meters).

It has functions of automatic-receive phone calls, using more convenient and safe. Using newest production process and ultrasonic structure without screw, also it has functions of waterproof, HD-Voice. Designed for motorcycle riders, making sure safely riding.

## The installation diagram



## Operation of phone

### 1. Power on/Power off

Power on: Long press MOTOR button about 2s then release, main device light flash.

Power off: Press Power off.

### 2. Connect with phone (GPS/MP3)

Long press Phone button 5s, until red & blue light flash. Turn on phone bluetooth and search bluetooth to connect V6, pairing successfully, intercom's blue light flash. (If GPS/MP3 support bluetooth function, same operation way with phone)

### 3. Last number redial

After connecting phone, long press Phone button 3s, device will automatic dial phone of the final phone calling number.

#### **4. Receiving a call**

When comes a call, without operation 5s, phones will automatic receive.

#### **5. Refuse a call**

When comes a call, press Phone button to end call.

#### **6. Play/Suspend music**

Short press Phone button (95% compatible with cellphone music play).

#### **7. Volume control**

Add volume: Press Volume +

Down volume: Press Volume -

#### **8. Choose music**

Previous music: Long press Volume - for 2s

Next music: Long press Volume + for 2s

#### **9. Charging tip**

When charging, the red light is always on, after the full charge, the red light is off.

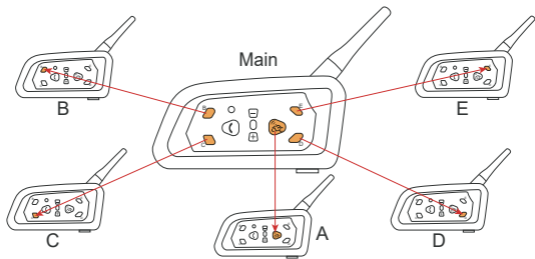
#### **10. Clear pairing (Restore factory settings)**

Press Phone button and B button at the same time, the indicator light flashes red three times and blue once.

### **Operation of Intercom**

V6 support six riders use device, two riders talk at the same time, one main device are pair with 5 sub-devices, the main device can choose one to talk from A/B/C/D/E sub-devices.

Attention: The main device can not talk with other 5 devices at same time, it is choose one sub-device to talk. Choose from A/B/C/D/E, press main device's MOTOR/B/C/D/E button to switch, realize two riders talking. The other five sub-devices cannot talk between with each other.



## 1. Pairing with A device

Long press the MOTOR buttons of main device and A device about 5s together, both device red & blue lights flash. After both of them find each other, one of them will automatically initiate a pairing connection, and the blue light will flash quickly. After a while, the blue light flashes slow simultaneously, two devices can normal talk. To pair the next sub-machine, press the MOTOR buttons first to disconnect.

## 2. Pairing with B device

Long press the B buttons of main device and B device about 5s together, both device red & blue lights flash. After both of them find each other, one of them will automatically initiate a pairing connection, and the blue light will flash quickly. After a while, the blue light flashes slow simultaneously, two devices can normal talk. To pair the next sub-machine, press the B buttons first to disconnect.

**( C device, D device and E device have same pair way as above, pairing relative C button, D button and E button. )**

Simply saying: The MOTOR/B/C/D/E buttons on the main device are for pairing with the MOTOR/B/C/D/E buttons on five other subdevices. After pairing, press Corresponding pairing buttons of main device to talk with other five subdevices.

Eg: When the main device needs to talk to the A sub-device, press the MOTOR button of the main device to connect and talk. If the main device needs to talk to the sub-device B, press the B button of the main device to switch and talk. C/D/E has the same way of operation as above.

Note: The next time use it, don't need to pair it again, just click the MOTOR/B/C/D/E buttons on the main device to connect and talk.

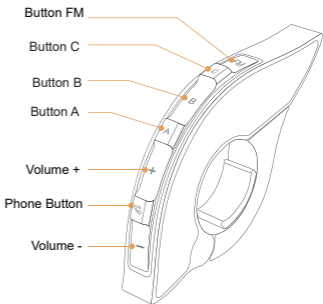
## **Precautions for use**

1. Please install correctly, under raining situation, making sure headphone jack to fully inserted state with devices, to prevent the devices into the water.
2. In order to ensure the battery life, please use the standard charger.
3. In order to ensure the safety of riding, don't recommended to listen music in riding.
4. In the riding state, do not to manually operate the device button, pay attention to safety.
5. In order to ensure the communication distance, it is recommended to use in an open areas.

## EUC Remote Controller (Optional)

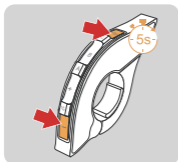
### Buttons Introduction

Buttons	Actions	Function
Volume -	Short press	Volume -
	Long press	Previous song when music is playing.
	Double click	None
Phone Button	Short press	Answering a call when it comes in/ On call, hang up/ Music play/pause/ Connect last connected phone when no phone is connected
	Long press	Call rejection Voice assistant
	Double click	Last number redial
Volume +	Short press	Volume +
	Long press	Next song when music is playing
	Double click	None
Button A	Short press	Intercom A pairing
	Long press	Disconnecting the intercom
	Double click	Intercom D pairing
Button B	Short press	Intercom B pairing
	Long press	Disconnecting the intercom
	Double click	Intercom E pairing



Buttons	Actions	Function
Button C	Short press	Intercom C pairing
	Long press	Disconnecting the intercom
	Double click	None
Volume - + Button FM	Super Long Press	Clear EUC handle pairing records

## EUC Pairing



1

Long press both <Button FM> and <Volume -> of EUC for 5s to clear the pairing record of EUC.

- Red light and blue light are on at the same time



2

Long press both <Phone Button> and <Button E> for 5s to enter the handle pairing mode, the red and blue lights flash alternately and quickly.

- Red light and blue light are on at the same time



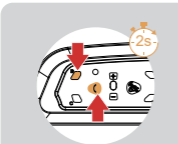
3

Click any button of EUC

**Pairing Successfully** «) "Du"

(If EUC cannot be successful paired in 2 mins, it will automatically exit the pairing mode.)

## Restore Default Settings

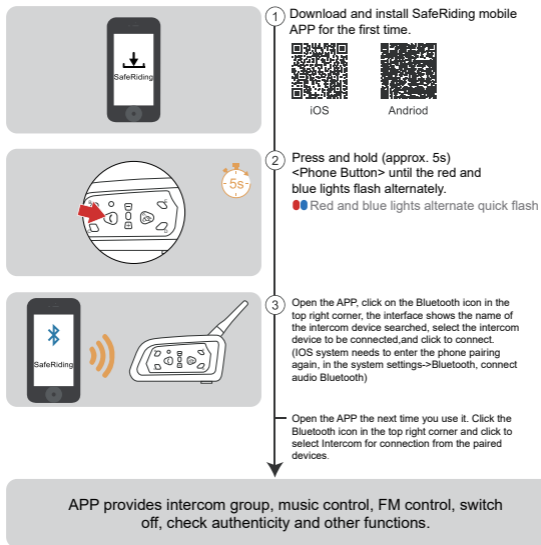


Press and hold both <B button> and <Phone button> for about 2s, the red light flashes 3 times quickly to delete the pairing record, and then the intercom will automatically power on again.

- 3 Quick Flashes
- ? "Di,Di,Di"



## Mobile App



This device contains licence-exempt transmitter(s)/receiver(s) that comply with Innovation, Science and Economic Development Canada's licence-exempt RSS(s). Operation is subject to the following two conditions:

- (1) This device may not cause interference.
- (2) This device must accept any interference, including interference that may cause undesired operation of the device.